

GMC S-15 JIMMY



GMC... A TRUCK YOU CAN LIVE WITH

GMC S-15 JIMMY ... 4WD SPORT UTILITY TRUCK

HIGH QUALITY AND VALUE

Our 1985 S-15 trucks utilize advanced technology that only was dreamed about when we started back in 1902. But our ultimate goal hasn't changed—to offer efficient, quality light-duty trucks that are a pleasure and comfort to drive. We want you to be assured of comfort, convenience, aerodynamic efficiency, corrosion protection, and impressive value. Furthermore, all the people at GM who plan and build trucks for you are constantly seeking ways to make them even better.



Computers expedite the planning, design, and manufacture of the GMC S-15 Jimmy.

In the design stages, computers capable of simulating the actual performance vehicles in various driving situations are used to analyze ride and handling characteristics to aid in component selection. To achieve desired aerodynamic efficiency, S-15 trucks are tested for air drag in a wind tunnel with a huge 43-foot-diameter fan at the GM Technical Center in Warren, Michigan. At GM Proving Grounds, under grueling road-test conditions, and almost every conceivable climatic variation, vehicles are subjected to precision performance evaluation. An S-15 Jimmy with its approximately 10,000 parts undergoes about 1000 tests or checks for quality during assembly.



Constant quality checks are made during assembly.



4-WD Sierra Classic S-15 Jimmy. Tires are supplied by various manufacturers.

JIMMY...SPORT UTILITY TRUCK

For a sensational off-road caper you need a great getaway vehicle—the 1985 GMC 4-WD S-15 Jimmy! It's a sport utility truck that can be equipped to carry four adults and their luggage nearly anywhere they choose to go. Or, with the available 2-passenger rear seat folded flat, S-15 Jimmy has a load floor that's over 68 inches long — room to spare for long objects, camping gear, or whatever — up to 67.2 cubic feet.

EASY SHIFTING FROM 2-WD TO 4-WD WITH INSTA-TRAC

When the trail goes from fast track to low traction, one lever makes the shift from 2-WD HI to 4-WD HI, at any speed, without stopping. When you want to resume fuel-efficient freewheeling, just shift back to 2-WD HI and keep trucking. In 2-WD the front differential is disengaged, reducing gear wear and drag.

NEW SPORT TRIM FOR '85

Gypsy Sport available trim features new black chrome grille and headlamp bezels, door handles, key cylinder covers, and taillamp trim. And, there's a new available black rooftop luggage carrier to match the new Gypsy Sport trim. See pages 6 through back cover for more ways to create your one-of-a-kind S-15 Jimmy.

GMC COMMITMENT PLUS

Your first fill-up in your factory installed fuel tank is on us ... and there's more. See page 8 for details.



4-WD Sierra Classic S-15 Jimmy. Tires are supplied by various manufacturers.

NEW STANDARD TECH IV POWER

A new electronically fuel-injected 2.5 Liter four-cylinder gasoline engine is now standard in S-15 Jimmys. It's combined with the standard 4-speed manual transmission, or you can opt for the tough power of an available 2.8 Liter V6. Available five-speed manual or 4-speed automatic overdrive transmissions can be ordered with either engine.

NEW LOW-PRESSURE GAS SHOCK ABSORBERS

Standard ... they provide improved ride characteristics. Not available with on/off-road tires.

4-WD FRONT-AXLE DIFFERENTIAL



SHIFT FROM 2-WD HI TO 4-WD AT ANY SPEED WITHOUT STOPPING

- 1 Power comes from transfer case.
- 2 A locking sleeve engages right side of axle to transmit power to both front wheels.
- 3 In 4-WD both front wheels turn under power. Shifting from 4-HI to 2-WHEEL disengages the locking sleeve permitting front free-wheeling efficiency.

GMC BEAUTIFUL 2-WD S-15 JIMMY

S-15 Jimmy with 2-wheel drive is a flexible family sport wagon or vocational vehicle when 4-WD capability is not required. With its 100.5" wheel-base Jimmy is sized right for remarkable maneuverability, and its payload capacity (people and cargo) is 1000 pounds.

ROOMY INSIDE

Available rear bench seat expands seating to four passengers with room at back for luggage. In '85 new automatic-locking seat belts are standard on the front passenger seat and included with the rear-seat option. The rear seat folds to create a flat floor area with 67.2 cu ft of cargo space.

NEW EXTERIOR/INTERIOR TRIM FOR '85

In addition to the new black exterior trim for Gypsy Sport, all Jimmy models have a new black chrome finish for the tailgate release handle and lock cylinder plus the antenna included with available radios.

To personalize your S-15 Jimmy, we offer new available custom two-tone paint schemes and new styled road wheels on 2-WD models (included with 2-WD Gypsy Sport). On the inside, new pigskin-grain custom vinyl trim is featured for standard Sierra and available Sierra Classic models.

NEW CONVENIENCE FOR '85

Controls for the available intermittent windshield wipers are handier to use in '85, being fully integral with the multifunction switch on the steering column. There's a new partitioned fuse panel to facilitate electrical system service. And, our selection of available radios has been expanded. See pages 5 through back cover for chassis equipment, standard and available equipment, paint colors, and technical data.



2-WD Sierra Classic S-15 Jimmy with available special two-tone paint. Tires are supplied by various manufacturers.



When tilted, passenger seat slides forward



Available Gypsy rear seat

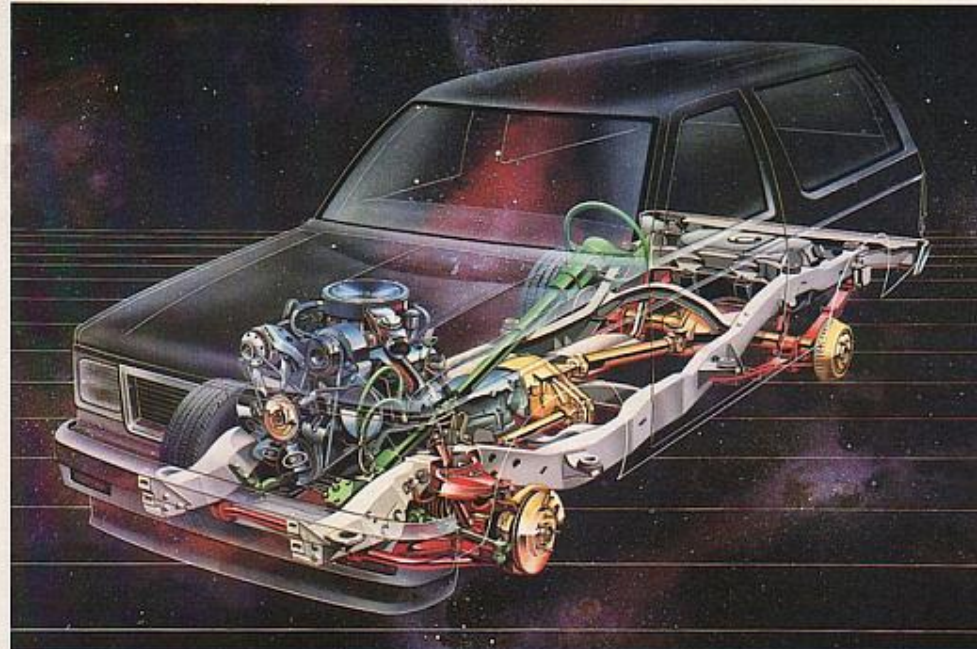


Sierra Classic interior



Gypsy interior with available sheepskin seat covers

GMC TOUGH



4-WD S-15 Jimmy cutaway

Double-Wall Construction is used in the hood, cowl, windshield pillars, front fenders, rear side panels, and tailgate.

Welded Steel Body—One-piece fabrication of major body panels for overall body structural rigidity, including rear quarter panels, wheel-houses, door and tailgate opening frames. New for '85—front fenders are fastened to the cowl with two bolts instead of one for added rigidity. New two-side-galvanized steel is used for front fender skirts and hood inner panel for added corrosion protection.

Carbon Steel Full Frame has a welded front box section and open-channel rear section. Entire frame is coated with hot wax to resist corrosion. New welded-on front bumper brackets are used for bumper-to-frame attachment in '85.

4-WD Torsion-Bar Independent Front Suspension employs rubber-bushed upper and lower control arms with torsion-bar springs attached to the lower arms, providing good ground clearance and low overall height as well as impressive ride and handling.

GM Protection Plan: An option that offers service protection beyond that provided by GM's new vehicle limited warranty. Available only in the USA and Canada during the 1985 model year. See your dealer for details.

EXTENSIVE ANTI-CORROSION TREATMENT

- Coated steels for most body and front-end sheet metal parts
- Zinc phosphate wash
- Entire body, including battery tray, fender skirts, and radiator support assembly, Cathodic Epoxy dip-primed
- Primer on all exterior surfaces
- Anti-chip coating entire length of rocker area
- High-quality acrylic enamel paint
- Wax coating in floor cavities
- Bonding and/or sealing of all glass, door areas, and endgate
- Double sealing of rear body area
- Rear wheelhouses sprayed with sound deadener

NEW TECH IV POWER

2.5 Liter L4 Gasoline Tech IV Power is Standard
New for '85 S-15 Jimmys, the standard engine for both 2-WD and 4-WD models is an electronically fuel-injected 2.5 Liter in-line 4. It features low-weight to horsepower ratio, low friction roller hydraulic valve lifters, swirl inlet ports, and more.

2.8 Liter V6—An available, smooth-operating gasoline engine with power and torque to move larger payloads efficiently. It's available for all Jimmy models and is required with available Trailering Special Equipment. For '85 a new pre-cleaner air cleaner is available with the V6 engine.

Transmissions—The standard transmission is a 4-speed manual. For added driving pleasure you may select available 5-speed manual overdrive, or 4-speed automatic overdrive transmission with either the L4 or V6 engine.

ENGINE TECHNICAL DATA

Displacement, Type	2.5 Liter EFI L4	2.8 Liter 2-8bi V6
Engine Ordering Code	LN8	LR2
Bore and Stroke, mm	101.6 x 76.2	89 x 76
Compression Ratio	9.0:1	8.5:1
SAE Net Horsepower @ RPM	92 @ 4400	115 @ 4800
SAE Net Torque Lbf/ft @ RPM	134 @ 2800	150 @ 2100

EFI = Electronic Fuel Injection

A WORD ABOUT ENGINES

GMC Trucks are equipped with engines produced at facilities operated by GM car and truck groups, subsidiaries, or affiliated companies worldwide.

GMC AVAILABLE EQUIPMENT

GMC S-15 Jimmy offers a large selection of available accessories. Certain items may require the purchase of other options; check with your GMC Truck Dealer.

TRAILERING WITH S-15 JIMMY

Equipped with a heavy-duty Trailering Special equipment package and other required equipment, a 2-WD S-15 Jimmy can tow up to 5000 lbs (up to 4000 lbs for 4-WD), including cargo and trailer. The package includes a weight-distributing platform hitch, 7-wire trailering harness, and heavy-duty flasher. The chart at the right lists some of the equipment required to obtain this package; see your GMC Dealer for complete details. Also available is a 2000-lb light-duty Trailering Special package with a deadweight-type hitch and 5-wire trailer harness; see your GMC Dealer for equipment requirements.



S-15 4-WD Jimmy pulling a trailer

TRAILERING DATA

S-15 Jimmy Model	2-Wheel Drive	4-Wheel Drive
Trailer Weight, Lbs	4000	5000
Max Tongue Load, Lbs	500	600
Axle Ratio	3.73:1	3.73/4.11:1*
Engine	2.8 Liter V6 Gasoline	
Transmission	4-Speed Automatic Overdrive	

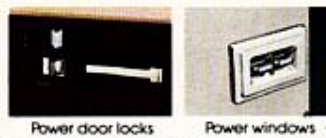
*When P235 tires are ordered, 4.11:1 axle ratio is required.



Electronic speed control



Reclining seat back



Power door locks

Power windows



Flat-folding rear bench seat



Cast aluminum wheels, 4-WD only



Deadweight trailer hitch



Roof air deflector

STANDARD AND AVAILABLE EQUIPMENT

TRIM LEVEL		SIERRA (STD)	SIERRA CLASSIC (YC2)	GYPSY (YC3)
EXTERIOR APPEARANCE				
GRILL/FRONT LAMP BEZELS	Chrome and Black Grille, Chrome Lamp Bezels Black Chrome Grille and Lamp Bezels	S	S	—
IDENTIFICATION	Front Integral GMC Letters on Grille	S	S	S
	Side "Jimmy" Nameplate on Front Fenders "4x4" Nameplate Below Front Fender Nameplate on 4-WD Models	S	S	S
	Rear Decal with GMC Letters on Tailgate GMC Letters on Tailgate Applique	—	S	S
ORNAMENTATION	Front Black Plastic Windshield Mouldings	S	S	S
	Side Black Plastic Body/Fender Mouldings with Bright Trim Bright Wheel Opening Mouldings Black Plastic Wheel Opening Mouldings Black Plastic Rear Quarter Window Mouldings Door Handles Body Strip (requires solid color paint) Key Lock Cylinders	A(1) A A S (S2) — A S	S S S S — — —	S S S S — — —
	Rear Black Tailgate Applique with Bright GMC Letters and Trim Black Tailgate Release Handle and Lock Cylinder Tail Lamp Trim	— S S	S S S	S S —
WHEELS/WHEEL TRIM	2-WD Argent Painted Conventional Wheels White Painted Styled Wheels with Black and Red Trim and Black Hubs Bright Hubcaps with Black Trim Bright Wheel Trim Rings	S A S A	S A S —	— S — —
	4-WD Argent Painted Conventional Wheels Bright Hubcaps with Black Trim Bright Wheel Trim Rings Cast Aluminum Wheels	S S A A	S S S S	— S S —
INTERIOR APPEARANCE				
FLOOR COVERING	Color Keyed Rubber, Full Length Color Keyed Carpet, Full Length	S	—	—
HEADLINER	Color Keyed Cloth Over Foam and Molded Plastic, Full Length	S	S	S
INSTRUMENT PANEL TRIM	Textured Argent Finish for Instrument Cluster Bezel, Central Control Panel (Black center area), Storage Box Door, and LH/RH Air Outlets Brushed Metal Finish for Above Parts Specific Nameplate on Storage Box Door	— S S	— — —	— S S
MOLDINGS/TRIM PANELS (all parts are color-keyed unless otherwise specified)	Door Trim Panels Black Housing in Door Latch Release Handle Area Black Trim Plate Below Release Handle Area (3) Brushed Metal Finished Trim Plate in Window Control Area	S S — —	S S S S	S S S —

TRIM LEVEL		SIERRA (STD)	SIERRA CLASSIC (YC2)	GYPSY (YC3)
INTERIOR APPEARANCE (cont)				
MOLDINGS/TRIM PANELS (cont)	Door Trim Panels (cont) Special Custom Cloth Insert Above Armrest Sport Cloth Insert Above Armrest Carpet Trim on Lower Area with Map Pocket Lower Rear Quarter Trim Panels Molded Plastic, Includes Wheelhouseings Embossed Plastic Inserts Cloth Inserts to Match Front Door Inserts Argent Trim Plates with Ashtrays Brushed Metal Finished Inserts with Ashtrays Carpet Trim on Lower Area	— — — S S — — — —	S — S — S — S —	— — S — — — — —
	Molded Plastic Windshield Pillar Mouldings Molded Plastic Upper Door Mouldings (lock pillar side) Molded Plastic Rear Header Moulding Molded Plastic Upper Rear Quarter Trim Panels Molded Plastic Tailgate Trim Panel (with carpet trim on YC2/YC3) Molded Plastic Cover Rack Trim Panels Molded Plastic Jack Cover	— — — S S S	S S S S S S	— — — — — —
SKILL PLATES	Front Door Openings Full Length Black Plastic Tailgate Opening Full Width Color-Keyed Plastic	— —	S S	S S
SPARE TIRE COVER	Color Keyed Carpet Type	—	A	S
STEERING WHEEL TRIM	Bright Applique with Black GMC Letters on Horn Button Cover Bright Applique with Black Trim & GMC Letters on Horn Button/Spoke Shroud	— —	S —	S —
COMFORT/CONVENIENCE/PROTECTION				
AIR DEFLECTOR	Black Paint Finish, Mounted on Roof Over Tailgate Window	—	A	A
BUMPERS	Chromed Front and Rear with Bright Trimmed Black Rub Strip Color Keyed Painted Front and Rear with Bright Trimmed Black Rub Strip	— A(4)	S A(4)	S S
FLOOR MATS	Color Keyed Rubber, Front and/or Rear Tinted Glass All-Around	— —	A S	A S
GLASS	Deep-Tinted Glass For Rear Quarter and Tailgate Windows For Rear Quarter Windows Only	— — —	A A A	A A A
GRAB HANDLES	Over RH Door (4-WD models only) On Upper Rear Quarter Trim Panels (all models)	— —	S S	S S
GUARDS	Bright Door Edge Black Front Bumper	— —	A A	A A
HEATING/COOLING	Air Conditioning, Outside Air Type Cool Climate Package Flow-Through Power Ventilation Heater/Cooler, Deluxe Outside Air Type with Side Window Defrosters Tailgate Window Defroster, Electric	— — — — —	A S S S A	A S S S A
INSTRUMENT CLUSTER	Warning Light Type Gage Type with Trip Odometer Tachometer (includes gage-type cluster on Sierra models)	— — —	S A A	— S A

TRIM LEVEL		SIERRA (STD)	SIERRA CLASSIC (YC2)	GYPSY (YC3)
COMFORT/CONVENIENCE/PROTECTION (cont)				
INSTRUMENT CLUSTER (cont)	Tachometer (includes gage-type cluster on Sierra models) Central Side Out Airway Cigarette Lighter Color Keyed Energy-Absorbing Pad Right Hand Storage Compartment with Lock	— — — — —	A S S S S	A S S S S
INTERIOR LAMPS	Ashtray Lamp Courtesy Lamp (door or main light switch operated) Front and Rear Dome Lamps (door/tailgate or main light switch operated) Storage Box Lamp	— — — —	S S S S	S S S S
LUGGAGE CARRIER	Chromed or Black Finish, Mounted on Roof	—	A	A (S)
MIRRORS	Dual Black Exterior, Conventional Type (RH mirror is convex) Dual Black Exterior, Below Eyeline Type (RH mirror is convex) Dual Chromed Exterior, Below Eyeline Type (RH mirror is convex) Interior Rearview, Prismatic Type Interior Right-Hand View	— — — — —	A A A S A	A A — S S
POWER DOOR LOCKS/WINDOWS	Available Separately or Together in Operating Convenience Package AM, AM/FM, AM/PM with Clock, AM/PM Stereo with Clock (electronically tuned) AM/PM Stereo with Cassette Tape, Graphic Equalizer, and Clock (electronically tuned) AM/PM Stereo Seek and Scan with Cassette Tape, Clock, and Premium Speakers (electronically tuned)	— — — —	A A A A	A A A A
SEATS/SEAT BELTS	Full-Foam High-Back Front Bucket Seats with Folding Backrests, Inertia-Type Backrest Latches, and Easy-Entry Feature on RH Seat (includes outboard intractable lap/shoulder belts) Reclining Front Bucket Seat Backs Full-Foam 2-Passenger Folding Rear Bench Seat includes two manual lap belts, armrests on rear wheelhouseings, and zippered map pockets as part of armrest assemblies on Sierra Classic/Gypsy models Inside on LH Side Panel Behind Wheelhouseing (optional P205/P235 full-size spare stowed flat on floor at rear)	— — — —	A A A A	A S S S
SPARE WHEEL/TIRE CARRIER	Two Spoke Soft Plastic Color Keyed Wheel	—	—	S
STEERING WHEEL/COLUMN	Color-Keyed Energy-Absorbing Column with Anti-Thrust Locking Electric Deluxe Sport	— — —	S S —	S S —
SUNSHADES	Domfort® Type Steering Wheel to Match Above Wheels Color Keyed Padded, LWRH Sliding Color Keyed Plastic with Key Lock Between Front Seats	— — —	A A A	A S S
STORAGE CONSOLE	Color Keyed Plastic with Key Lock Between Front Seats	—	A	A
TAILGATE WINDOW RELEASE	Manual (with door key) Electric	— —	S —	S —
WINDSHIELD WIPERS/WASHERS	Electric, Two-Speed Wipers, Fluidic Washer Nozzle Electric, Two-Speed Wipers with Intermittent Wipe Feature, Fluidic Washer Nozzle	— —	S S	S S
OTHER EQUIPMENT (See "How to Order Guide" for details)				
	1- Includes bright wheel opening mouldings		2- Includes body color inserts	
			3- Concealed coin holder substituted on LH door	
			4- Requires optional 2-tone paint	
			5- Not available with chromed unit	

IMPORTANT! A WORD ABOUT THIS CATALOG: We have tried to make this catalog as comprehensive and factual as possible and we hope you find it helpful. However, since the time of printing, some of the information you'll find here may have been updated. Also, some of the equipment shown or described throughout this catalog is available as factory-installed options, as dealer accessories, and as specialized equipment from various independent suppliers at extra cost. Your dealer has details and, before ordering, you should ask him to bring you up to date.

The right is reserved to make changes at any time, without notice, in prices, colors, materials, equipment, specifications, and models. Check with you GMC Dealer for complete information.

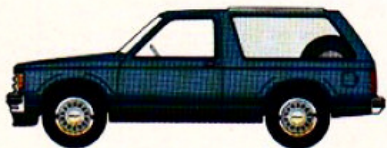
A WORD ABOUT ASSEMBLY, COMPONENTS, AND OPTIONAL EQUIPMENT IN THESE GMC PRODUCTS: The GMC Trucks described in this catalog are assembled at facilities operated by General Motors. These vehicles incorporate thousands of different components produced by car and truck groups and various component divisions of GM and by various suppliers to General Motors. From time to time during the manufacturing process, it may be necessary, in order to meet public demand for particular vehicles or equipment, or to meet federally mandated emissions, safety, and fuel economy requirements, or for other reasons, to produce GMC products with different components or differently sourced components than initially scheduled. All such components have been approved for use in GMC products and will provide the quality performance associated with the GMC name.

With respect to extra-cost optional equipment, make certain you specify the type of equipment you desire on your vehicle when ordering it from your dealer. Some options may be unavailable when your truck is built. Your dealer receives advice regarding the current availability of options. You may ask the dealer for this information. GM also requests the dealer to advise you if an option you ordered is unavailable. We suggest that you verify that your truck includes the optional equipment you ordered, or if there are changes, that they are acceptable to you.

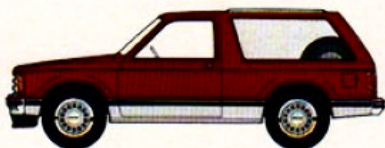
These vehicles are also available under the Chevrolet nameplate (Series S10 Blazer).

A WORD ABOUT UPDATED SERVICE INFORMATION: GMC Truck & Coach Operation regularly sends its dealers useful service bulletins about GMC Truck products. GMC Truck & Coach Operation monitors product performance in the field. We then prepare bulletins for servicing our products better. Now you can get these bulletins, too. Ask your dealer. To get ordering information, call toll free 1-800-551-4123.

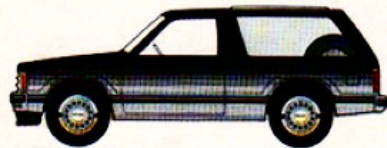
PAINT SCHEMES



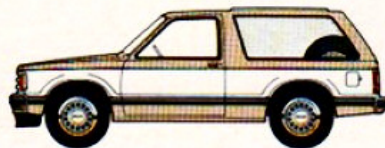
Sport Two-Tone scheme with striping on Sierra



Sport Two-Tone scheme with moldings



New Custom Two-Tone scheme on Sierra Classic



Special Two-Tone scheme on Sierra

Standard Solid Color—For Sierra and Sierra Classic models (see colors below). Available with this scheme: body striping in selection of six colors; black body-side moldings and/or black or bright wheel-opening moldings where not already provided.

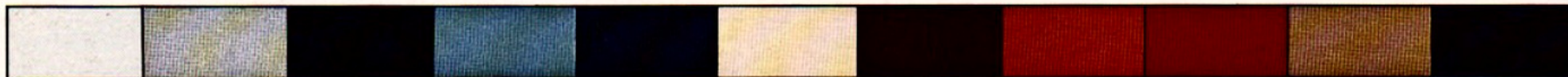
New Available Custom Two-Tone—For all models. Includes new body striping in selection of five colors. Available with this scheme: black body-side moldings and/or black or bright wheel-opening moldings where not already provided.

Available Special Two-Tone—For Sierra and Sierra Classic models. Center accent color on sides, front, and rear. Black body-side and bright wheel-lip moldings included on Sierra models. Black wheel-lip moldings available.

Available Sport Two-Tone—Lower accent color* extends around sides, front, and rear. Sierra models include lower body striping. Black moldings may be substituted on Sierra models at extra cost. Scheme is standard with Gypsy Sport package.

*Choice of five standard colors plus Satin Black.

EXTERIOR COLORS



Frost White Silver (M) Midnight Black Light Blue (M) Galaxy Blue (M) Doeskin Tan Indian Bronze (M) Cinnamon Red Apple Red Desert Sand (M) Satin Black (Sport two-tone accent only)

Note: For accurate colors, ask your GMC Dealer to show you actual paint color chips or fabric swatches.

GMC
TRUCKS
GENERAL MOTORS CORPORATION
TRUCK & BUS GROUP

Let's Get It Together...Buckle Up.

Every new 1985 GMC Light Duty truck delivered by a GMC Truck Dealer in the United States comes with a one-year, \$10,000 seat belt insurance certificate from MIC General Insurance Corporation at no additional charge. \$10,000 will be paid to the estate of any occupant who suffers fatal injuries as a result of an accident involving that vehicle while wearing a GM seat belt. Buckle up every time you drive.



TECHNICAL INFORMATION

MODEL TYPE	GASOLINE ENGINE	
	2-WHEEL	4-WHEEL
DRIVE TYPE	2-WHEEL	4-WHEEL
PAYLOAD RATING (lb)	1000	1000
ENGINE/TRANSMISSION AVAILABILITY		
2.5L L4/4-Speed Manual	Standard	Standard
2.5L L4/5-Speed Manual Overdrive	Available	Available
2.5L L4/4-Speed Automatic Overdrive	Available	Available
2.8L V6/4-Speed Manual	Available	Available
2.8L V6/5-Speed Manual Overdrive	Available	Available
2.8L V6/4-Speed Automatic Overdrive	Available	Available
FRONT SUSPENSION	Independent, Coil Springs (2-WD)/Torsion Bars (4-WD)	
Capacity (lb)	2200	2400
Spring/Torsion Bar Capacity (lb) (1)	1100	1200
Shock Absorber Diameter (mm)	Std:25; Avail:32	Std:25; Avail:32
Stabilizer Bar Diameter (mm)	29	32
REAR SUSPENSION	Salisbury Axle, Leaf Springs	
Axle Capacity (lb)	2600	2700
Spring Capacity (lb) (1)	1350	1350
Shock Absorber Diameter (mm)	Std:25; Avail:32	Std:25; Avail:32
BRAKES	Hydraulic, Front Disc/Rear Drum	
Vacuum Booster	Standard	Standard
Parking	Cable to Rear Wheels	
STEERING	Std:Manual; Avail:Power	
TIRES, RADIAL PLY	Standard	P195/75R-15(2)
	Available	Various; Consult your GMC Dealer
FUEL TANK CAPACITY (gal)	Std:13.2; Avail:20	
FREEDOM BATTERY, CCA	Standard	405
	Available	515
GENERATOR, AMPS	Std:56; Avail:66	

CCA = Cold Cranking Amps

1 - At ground, each

2 - All Seasons type

GMC Commitment Plus: To show our appreciation should you decide to purchase an eligible 1985 GMC Light-Duty Truck, your dealer will fill your factory-installed fuel tank at time of delivery, and you will receive a Personalized Identification Card to include with your Owner Package. Applies to retail sales only.